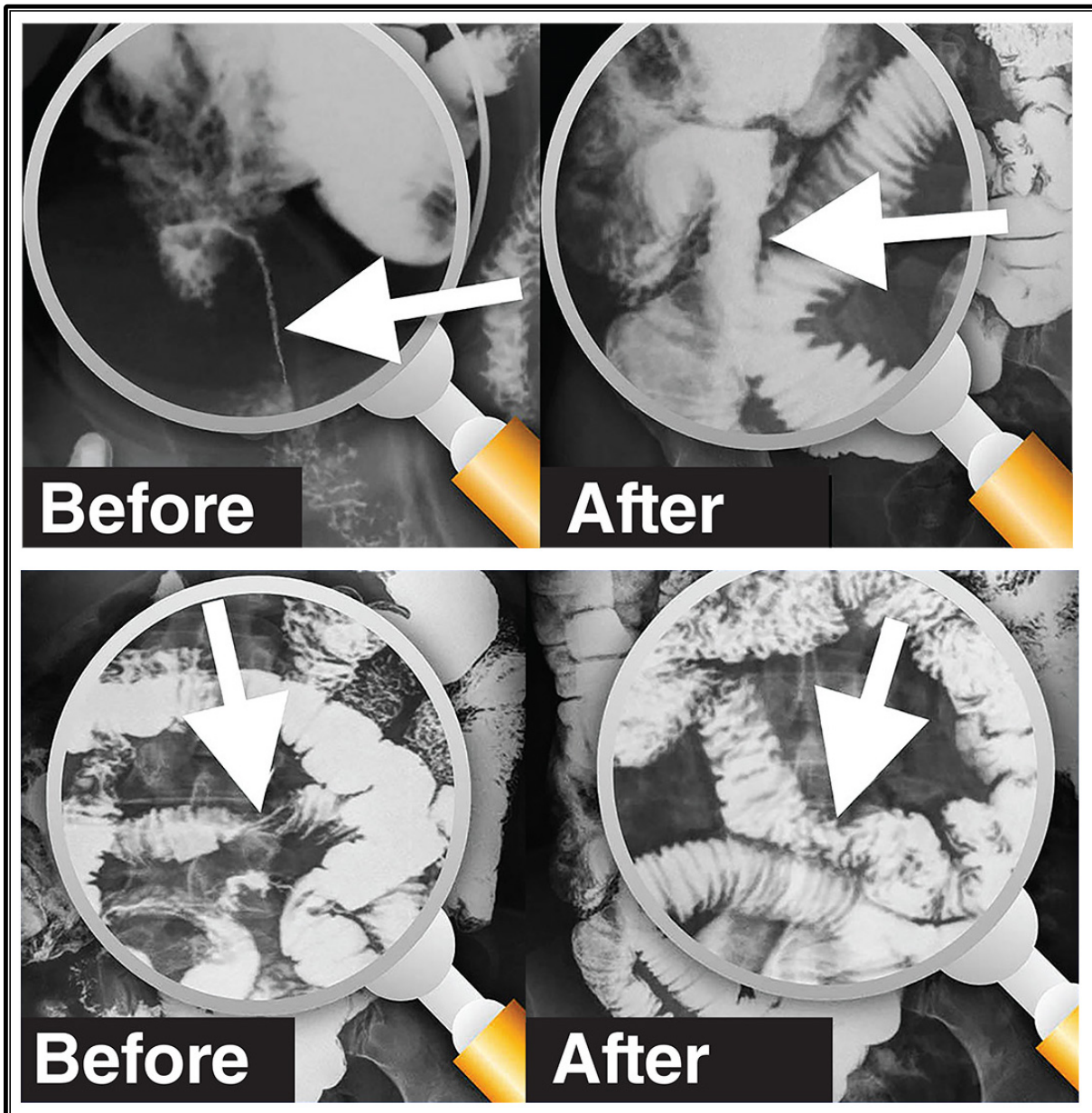




Manual physical therapy clears adhesive bowel obstruction and strictures in a patient with Crohn's disease

¹ Leonard B Weinstock, ² Janey S A Pratt, ³ Lawrence Wurn, ⁴ Sharon Hepburn,

Clear Passage clears obstructed bowel in a patient scheduled for emergency surgery using only manual therapy (no surgery)



Study authors include Surgeon and Gastroenterologist MDs from Stanford and George Washington Medical schools